

## THE ORCHID SHOW



### Amami Island

Collector's Edition: 46" x 52" framed giclée on canvas | \$4,200.00  
 Silver Edition: 26" x 29" framed giclée on canvas | \$1,500.00  
 Luminous Edition - 16" x 20" on polished aluminum | \$550.00  
 Signature Edition: 16" x 20" unframed on archival paper | \$300.00  
 Desksize Edition: 8" x 10" on polished aluminum | \$100.00

On the island of Kyushu in the Ryukyu Archipelago of Japan grows an exotic group of Japanese orchids. Called *Neofinetia falcata*, these unusual white orchids have a long history in Japan, dating to the ruling Shogun. About the size of a thumbnail, these tiny orchids entice you with elegant white blooms emitting the most beautiful, sweet coconut-like perfume. In nature, plants can be dusted with snow in winter and deluged by monsoons in summer. With its long tail and dainty face, Amami Island seems to personify the islands of Japan. You can almost hear this tiny orchid talking to you as you look at this image.



### Dendrobium

Collector's Edition: 46" x 52" framed giclée on canvas | \$4,200.00  
 Silver Edition: 26" x 29" framed giclée on canvas | \$1,500.00  
 Luminous Edition - 16" x 20" on polished aluminum | \$550.00  
 Signature Edition: 16" x 20" unframed on archival paper | \$300.00  
 Desksize Edition: 8" x 10" on polished aluminum | \$100.00

This *Dendrobium* species is native to the lowland forests of Vietnam, Laos, Burma and Thailand where it is found growing on rocks and small bushes. The bright orange blossoms seem to reach for the heavens on this diminutive orchid.



### Enobi Splash

Collector's Edition: 46" x 46" framed giclée on canvas | \$4,200.00  
 Silver Edition: 26" x 26" framed giclée on canvas | \$1,500.00  
 Luminous Edition - 16" x 20" on polished aluminum | \$550.00  
 Signature Edition: 16" x 20" unframed on archival paper | \$300.00  
 Desksize Edition: 8" x 10" on polished aluminum | \$100.00

Enobi Splash is an exotic orchid the artist photographed in Hawaii. *Dendrobiums* grow as epyphytes throughout Asia and New Zealand, attaching themselves to trees where they receive nourishment from decaying leaf matter. The flower in this image is an example of the sophisticated breeding modern orchid growers have achieved with the dendrobium genus. Enobi Splash bears an underlying innocence and softness, but its purple streaks communicate to you in a bold and exciting way.



**Green Hornet**

Collector's Edition: 46" x 46" framed giclée on canvas | \$4,200.00  
 Silver Edition: 26" x 26" framed giclée on canvas | \$1,500.00  
 Luminous Edition - 16" x 20" on polished aluminum | \$550.00  
 Signature Edition: 16" x 20" unframed on archival paper | \$300.00  
 Desksize Edition: 8" x 10" on polished aluminum | \$100.00

*Prosthechea cochleata* 'Green Hornet,' an orchid native to tropical America, grows throughout the region from South Florida through South America. Green Hornet is the national flower of Belize, where it is also known as the Black Orchid. These beautiful flowers seem to float in space on their tiny stems. This flower, in particular, seems almost alien in nature.



**Ignea**

Collector's Edition: 46" x 46" framed giclée on canvas | \$4,200.00  
 Silver Edition: 26" x 26" framed giclée on canvas | \$1,500.00  
 Luminous Edition - 16" x 20" on polished aluminum | \$550.00  
 Signature Edition: 16" x 20" unframed on archival paper | \$300.00  
 Desksize Edition: 8" x 10" on polished aluminum | \$100.00

There are over 500 species of *Masdevallia* orchids growing throughout Latin America. The genus is named for Jose Masdeval, a physician and botanist in the court of Charles III of Spain. *Masdevallia* orchids are difficult to grow because of their exacting cultural requirement. Ignea is a species that grows in the cloud forests of the eastern Cordillera of Colombia. It is sometimes called the Christmas *Masdevallia* because it blooms in late December.



**Kaleidoscope**

Collector's Edition: 46" x 46" framed giclée on canvas | \$4,200.00  
 Silver Edition: 26" x 26" framed giclée on canvas | \$1,500.00  
 Luminous Edition - 16" x 20" on polished aluminum | \$550.00  
 Signature Edition: 16" x 20" unframed on archival paper | \$300.00  
 Desksize Edition: 8" x 10" on polished aluminum | \$100.00

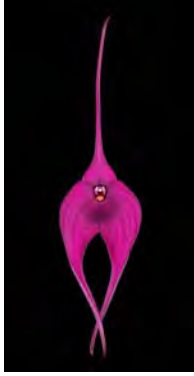
This beautiful *Phalaenopsis* orchid is a hybrid from parents native to Asia, where it grows in the crevices of trees with little to no soil. With its zebra-like stripes, Kaleidoscope provides a splash of brilliant color and motion against its black backdrop. This flower is a clone of the hybrid that was grown in Florida and awarded an Award of Merit by the American Orchid Society.



**Laelia**

Collector's Edition: 46" x 52" framed giclée on canvas | \$4,200.00  
 Silver Edition: 26" x 29" framed giclée on canvas | \$1,500.00  
 Luminous Edition - 16" x 20" on polished aluminum | \$550.00  
 Signature Edition: 16" x 20" unframed on archival paper | \$300.00  
 Desksize Edition: 8" x 10" on polished aluminum | \$100.00

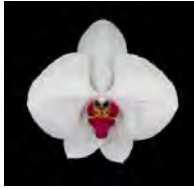
In ancient Roman religion, Laelia was one of the Vestal Virgins who were priestesses of Vesta, goddess of the hearth. They cultivated the sacred fire that was not allowed to go out. In orchid culture, *Laelia* species are found in the subtropical or temperate climate of Central America, but mostly in Mexico, and are highly coveted because of their exotic beauty. This flower was growing in an exotic orchid nursery in Santa Barbara, where its luminous pink petals glistened in the steamy hothouse.



**Machu Picchu**

Collector's Edition: 32" x 60" framed giclée on canvas | \$4,200.00  
 Silver Edition: 26" x 48" framed giclée on canvas | \$1,500.00  
 Luminous Edition - 16" x 20" on polished aluminum | \$550.00  
 Signature Edition: 16" x 20" unframed on archival paper | \$300.00  
 Desksize Edition: 8" x 10" on polished aluminum | \$100.00

Machu Picchu is one of the most exotic orchid hybrids in the *Masdevallia* genus. With its brilliant fuschia purple color and whimsically crossed petals, it seems to dance in an elegant ballet. Macchu Picchu is a hybrid of *Masdevallia coccinea*, which grows in the rocky soil at high altitudes in the Eastern Cordillera of Colombia. Machu Picchu is always in motion.



**Phalaenopsis**

Collector's Edition: 46" x 46" framed giclée on canvas | \$4,200.00  
 Silver Edition: 26" x 26" framed giclée on canvas | \$1,500.00  
 Luminous Edition - 16" x 20" on polished aluminum | \$550.00  
 Signature Edition: 16" x 20" unframed on archival paper | \$300.00  
 Desksize Edition: 8" x 10" on polished aluminum | \$100.00

A simple white moth orchid from the Philippines, *Phalaenopsis* is native to Asia from the Himalayas to northern Australia, where they grow in the crevices of trees with little to no soil. *Phalaenopsis* is one of the most popular orchids in the trade because of their beauty and adaptability. The scientific name is probably a reference to the genus *Phalaena*, the name given by Carolus Linnaeus to a group of large moths; the flowers of some species supposedly resemble moths in flight, hence their common name. This one flowered for several weeks in our home. *Phalaenopsis* is the quintessential white orchid of today.



**Samurai**

Collector's Edition: 52" x 46" framed giclée on canvas | \$4,200.00  
 Silver Edition: 29" x 26" framed giclée on canvas | \$1,500.00  
 Luminous Edition - 16" x 20" on polished aluminum | \$550.00  
 Signature Edition: 20" x 16" unframed on archival paper | \$300.00  
 Desksize Edition: 10" x 8" on polished aluminum | \$100.00

This hybrid dendrobium from Hawaii seems to fly through space. *Dendrobiums* are native to Asia and New Zealand, but this hybrid hails from the greenhouses of the Hawaiian Islands. These plants grow as epyphytes, attaching themselves to trees where they receive nourishment from decaying leaf matter. With its whimsical nature, Samurai makes a great subject for this image.



**Sweet Sixteen**

Collector's Edition: 46" x 46" framed giclée on canvas | \$4,200.00  
 Silver Edition: 26" x 26" framed giclée on canvas | \$1,500.00  
 Luminous Edition - 16" x 20" on polished aluminum | \$550.00  
 Signature Edition: 16" x 20" unframed on archival paper | \$300.00  
 Desksize Edition: 8" x 10" on polished aluminum | \$100.00

*Cattleya* orchids became famous as the corsage orchid of our youth, and they, perhaps better than any species, represent the idealized picture we have of orchids. For many, cattleyas are the quintessential orchids that decorated orchid corsages, but these beautiful flowers have an interesting history. Native to Central and South America, cattleyas entered cultivation in England, when Sir William Cattley received them as packing materials for seemingly more valuable orchids. This hybrid is named 'Janice Evans Sweet Sixteen,' and it hails from Santa Barbara, where it is often the star of the orchid shows. When you see 'Sweet Sixteen,' you can imagine the delight on a young girl's face when her date arrives with an orchid corsage before the prom.



**Sirene**

Collector's Edition: 46" x 46" framed giclée on canvas | \$4,200.00  
 Silver Edition: 26" x 26" framed giclée on canvas | \$1,500.00  
 Luminous Edition - 16" x 20" on polished aluminum | \$550.00  
 Signature Edition: 16" x 20" unframed on archival paper | \$300.00  
 Desksize Edition: 8" x 10" on polished aluminum | \$100.00

Sirene is a *Phalaenopsis* orchid, native throughout Southeast Asia from the Himalayan mountains to northern Australia. In Greek mythology, the sirens were dangerous and beautiful creatures, portrayed as femmes fatales who lured nearby sailors with their enchanting music and voices to shipwreck on the rocky coast of the "flowery" island of Anthemoessa. Sirene, a delicate orchid, can seem bewitching in her speckled camouflage.